



# nanoKONTROL2 System Firmware Update

## Update Procedure for Windows users


 This updater is compatible with Windows XP SP3, Windows Vista SP2, and Windows 7 SP1.

 The latest "KORG USB-MIDI Driver" needs to be installed before the update.

Download the driver from the KORG website and install it as directed by the included documentation.(<http://www.korg.com>)

 If the driver installed on your computer is older than latest version, install the latest version of the driver before starting the update.

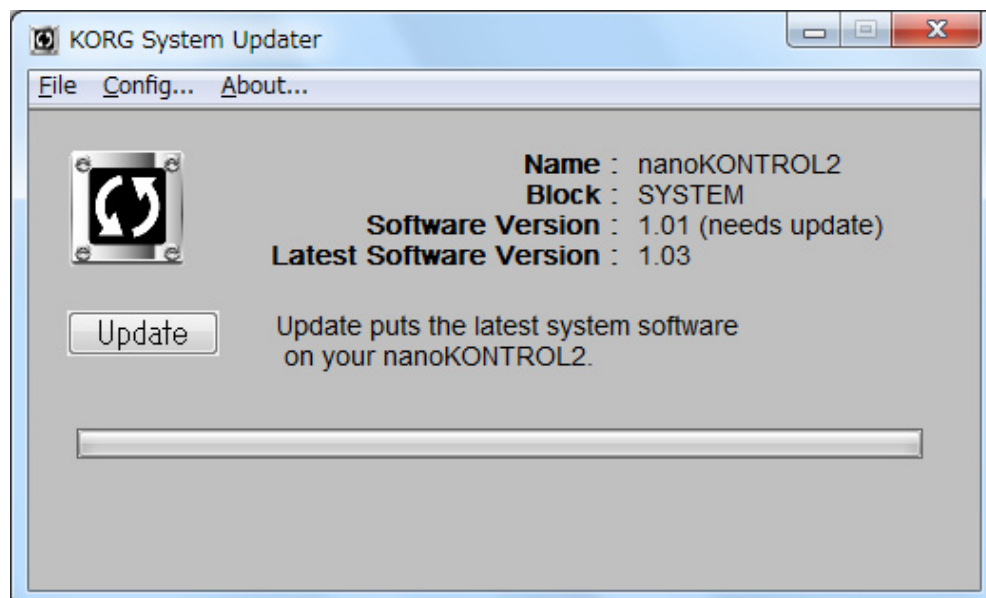
1. Unzip the nanoKONTROL2\_Updater\_XXXX.zip file (XXXX is a version number).

 Unzip all the files in the zip file before proceeding to [Step 2]. The updater will not be able to find all the necessary files if they were not unzipped.

2. Turn on the Power of the nanoKONTROL2 while holding the [MARKER <] and [MARKER >] and [CYCLE] buttons. This will put it in "Update Mode".

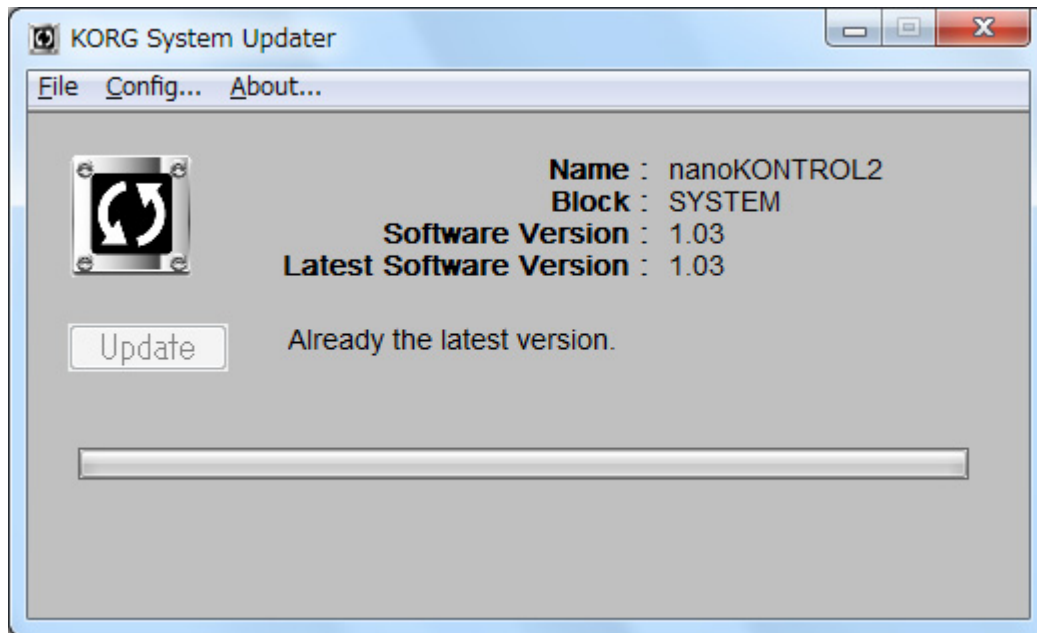
The Power LED will blink.

3. Execute the kmupdate.exe. The following window will appear: (This is the image of the updater window when the nanoKONTROL2 version is 1.01, and the latest version is 1.03)



4. Push the [Update] button in the window to start the process.

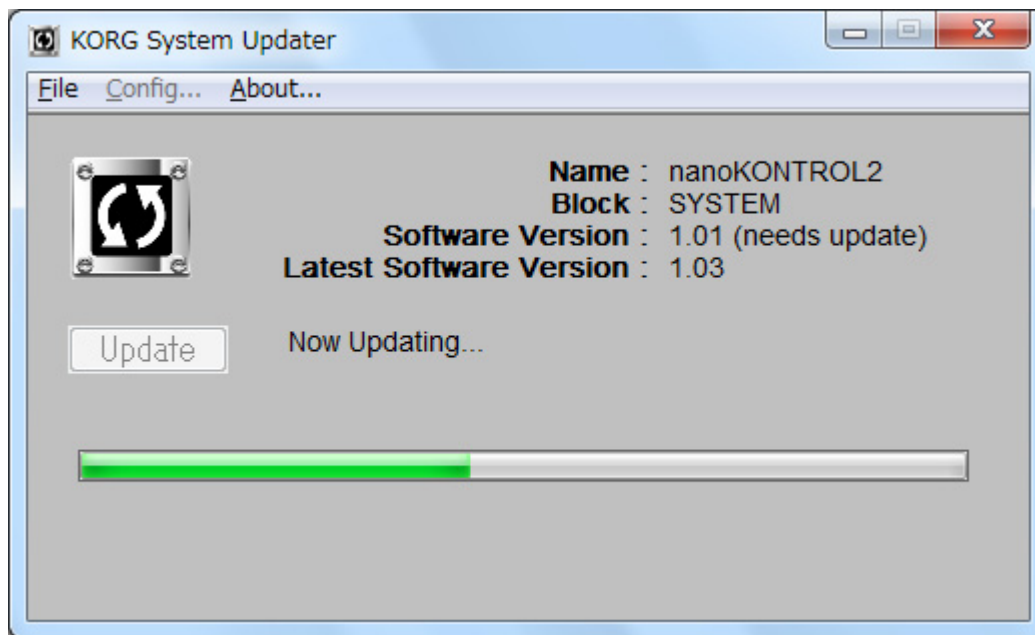
🔊 If the following message is shown, the system firmware is already up to date, and no change is needed. In this case simply quit the KORG System Updater.



🔊 If an "Error message" is shown, confirm that the "nanoKONTROL2" is connected to the computer properly, the "KORG USB-MIDI Driver" has already been installed and is showing nanoKONTROL2, and not "USB audio device", and the driver is Version 1.08 or later.

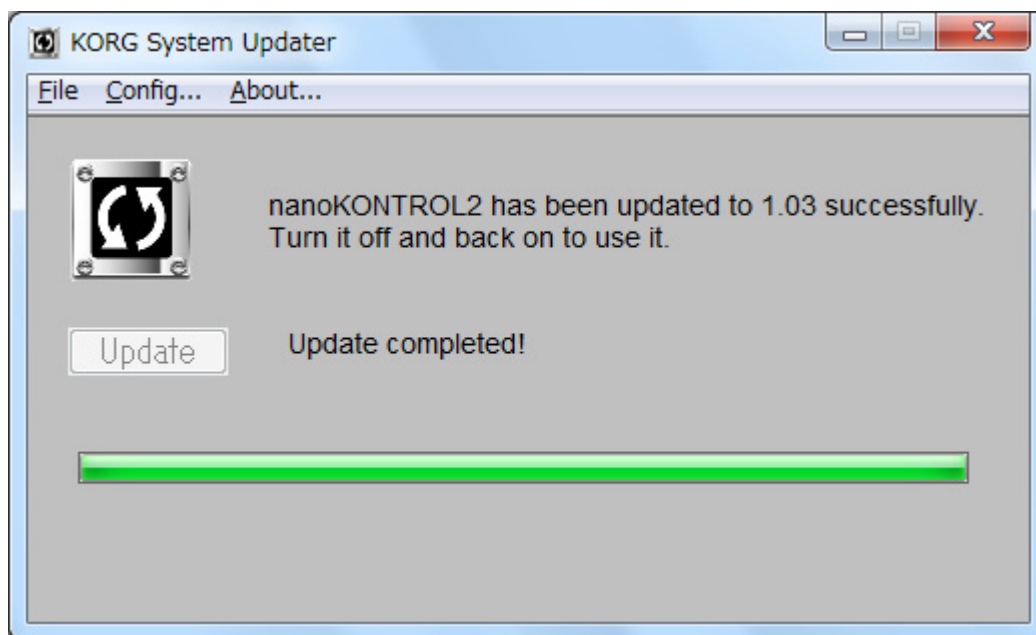
🔊 The updater can't recognize the nanoKONTROL2 if [Step 2] and [Step 3] are not done in the right order.

5. During the updating process, the following window will appear. The whole process might take several minutes to complete.



**⚠ Do not turn off the nanoKONTROL2 during the update process.**

6. The following message will be shown when the update has successfully completed. This will conclude the entire update procedure.



7. Quite the KORG System Updater, and reboot the nanoKONTROL2.
8. You can confirm the current system version by the [Select Device] command on the [File] menu of the KORG KONTROL Editor.